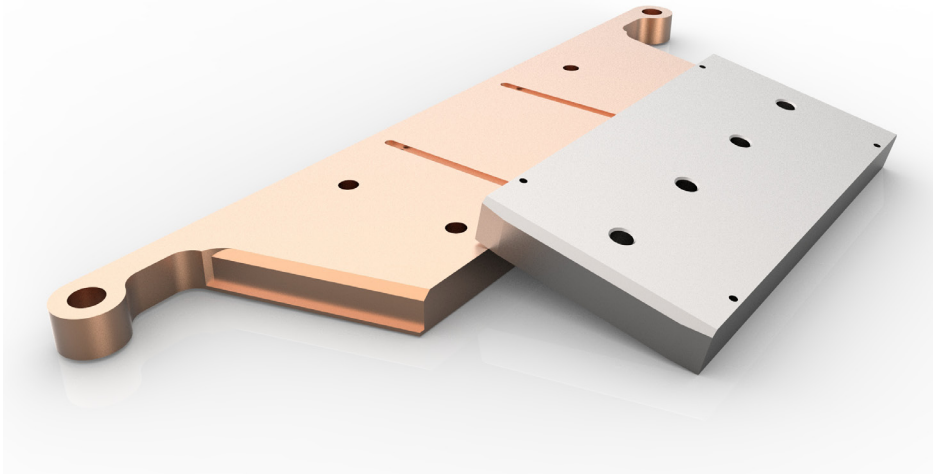


Saddle Block Wear Plates

4100 XPB/C Electric Rope Shovels.

Benefits:

- Mainetec have a range of offerings for the saddle block wear plates from Bronze & Mild Steel these parts are a direct will fit part and can be easily installed.



Part #	Description	Mass (kg)
S132207698	Bronze, Saddle Block Upper Wear Plate 1.5" Thick	198
S130107700	Steel, Saddle Block Lower Wear Plate 1.5" Thick	185
S132207699	Bronze, Saddle Block Upper Wear Plate 1.88" Thick	218
S130107701	Steel, Saddle Block Lower Wear Plate 1.88" Thick	200
S132208702	Bronze, Saddle Block Side Wear Plate 2.13" Thick	276
S130108705	Steel, Saddle Block Side Wear Plate 2.13" Thick	253
S132208703	Bronze, Saddle Block Side Wear Plate 3.13" Thick	119
S130108706	Steel, Saddle Block Side Wear Plate 3.13" Thick	183
S132208704	Bronze, Saddle Block Side Wear Plate 2.63" Thick	167
S130108707	Steel, Saddle Block Side Wear Plate 2.63" Thick	153

Custom made wear plates are available in any thickness or material including self lubricating nylon to suit your requirements.